



Koombana Bay  
SAILING CLUB



# Sailing Programme

2024/2025

Anchorage Cove Bunbury WA

Phone: (08) 9791 3914

[www.koombanabay.com](http://www.koombanabay.com)





**Brecken  
Health**

BUILT TO CARE

At Brecken Health, we are dedicated to providing you with the highest quality medical care



## Our locations:

- Bunbury: 12-16 Vasse Street, Bunbury
- Busselton: 86 Bussell Hwy, Busselton
- Leschenault: 12 Leisure Drive, Australind

## What we offer you:

- Family Practices
- Walk-in appointments
- Complete Corporate Care
- Registered Travel Clinic
- Physiotherapy (Bunbury & Leschenault)
- Podiatry (Bunbury & Leschenault)
- After Hours (Bunbury)
- Exercise Physiology (Bunbury)
- Pharmacy, Pathology, Dental, Physio all on site (Bunbury)
- Immigration / Visa Medicals (Bunbury)

A one stop shop for all your health needs!

**Bulk Billing for all under 16s and Concession Card Holders**

**Get in touch today!** ☎

Bunbury (08) 9791 8133

Busselton (08) 9751 5222

Leschenault (08) 9725 8471



## COMMODORES WELCOME

Welcome to the 2024 / 25 sailing season, the Koombana Bay Sailing Club's 70th birthday.

It truly is an honour and privilege to be the Commodore of this wonderful club, part of Bunbury's history, during this celebrated year of our existence. During a time where so much has changed, our club has stayed the centrepiece of sailing in Bunbury, through our much valued sponsors, a strong and diverse membership and a wonderful group of volunteers for 70 years.

This year we once again have a very good committee at KBSC which will provide another great sailing programme, including the popular twilights, fantastic opportunities for sail training for all and other training associated with sailing. Members will again enjoy a great social programme, camaraderie, friendship and the usual banter before and after sailing. We will again host the Southwest S80 Championships, open the Club for "Discover Sailing Day", host Rotary Sail Into Life and the West Coast Outrigger Canoe Club. Something for everyone, I'm sure you'll agree.

As the season progresses I will be working with your committee to open a new initiative allowing the public to access racing sailing at KBSC on a regular basis, to give a sailing experience to the community that they may not have previously had. It is my intention to increase participation at the Club, including following on with the opportunities already available and increasing those avenues.

Work on the proposed Marina is progressing as part of the Club's strategic planning, with modelling now in place awaiting EPA approval.

Thanks to all our members, committee, volunteers, sponsors and competitors who continue to support our club, I look forward to catching up with you all throughout the year and wish you all the best in the 70th year of sailing on Koombana Bay.

Ian Anderson – Commodore



# Koombana Bay Sailing Club Inc.

Anchorage Cove (PO BOX 56) BUNBURY WA 6231

[www.koombanabay.com](http://www.koombanabay.com)

**PATRON:** Don Punch (MLA)

**VICE PATRON:** Jaysen de San Miguel (Mayor)

## MANAGEMENT COMMITTEE

COMMODORE	IAN ANDERSON	0412 018 937
	cooee2.ian@gmail.com.au	
VICE COMMODORE	PETER SWANSON	0408 066 372
	peterpisces@hn.ozemail.com.au	
REAR COMMODORE	TEGAN MADSON	0427 853 188
BUSINESS	tegan_madson@hotmail.com	
REAR COMMODORE	PHIL TRUMAN	0417 188 254
SAILING	philtruman904@gmail.com	
REAR COMMODORE	TIM SPARROW	0427 197 416
DINGHIES	wynyard.sparrow@gmail.com	
SECRETARY	LISA COWELL	0415 708 941
	lisacowell3@yahoo.com	
TREASURER	JAK KELLY	0448 833 793
	jakellyca@yahoo.com.au	
IMMEDIATE PAST	DERI PRICE	0412 462 007
COMMODORE	mardertrust@bigpond.com	

## COMMITTEE

DAVID DOHERTY	0418 933 517
DALE CLEMONS	0418 951 320
PETER MIDGELOW	0410 927 671
SEATON FIELD	0417 958 856
KELLY PAUL	0429 853 987
KIM SHEPHERD	0412 194 166
ANTHONY NESS	0488 454 523

## TRUSTEES

BRIAN ALLEN  
MALCOM BRYANT  
COLIN EASTICK

## OFFICE MANAGEMENT

ADMINISTRATION (08) 9791 3914  
admin@koombanabay.com  
FUNCTIONS 0499 023 995  
functions@koombanabay.com

## HOUSE AND GROUNDS MANAGEMENT

TWILIGHT REGISTRATIONS	PETER SWANSON	0408 066 372
MOORINGS	JOHN BROHMAN lesleyjohn_brom@bigpond.com	0488 123 747
DINGHY SHED	SEATON FIELD seatonfield@gmail.com	0417 958 856
COMPOUND	DAVID DOHERTY naturaliste45@gmail.com	0418 933 517
NEWSLETTER/WEBSITE	SARAH TWIGGER kbscnews@gmail.com	0424 126 663
RACE NOMINATIONS	JUDY TALBOT	(08) 9726 1236
	JEAN COWELL	(08) 9721 1237
HANDICAPPER	CLEVE ARMSTRONG KARIN DONOVAN	0407 775 914
RACE TOWER	JEAN COWELL	(08) 9721 1237
TWILIGHT COORDINATOR	JEFF CLIFTON	(08) 9725 1994
TRAINING COORDINATOR	PETER MIDGELOW peter.midgeLOW@gmail.com	0410 927 671
MEMBERSHIP OFFICER	KELLY PAUL kellypaul11@gmail.com	0429 853 987

## CLASS CAPTAINS

DIVISION 1	SCOTT GUMMERY	0427 338 828
DIVISION 2	PENDING	
DIVISION 3/JaM	WARWICK LITCHFIELD	0417 910 863
DINGHIES	DAVID PILBEAM	0418 822 791
WEST COAST OUTRIGGERS	LUCY PRIES westcoastocc@gmail.com	
ROTARY SAIL INTO LIFE	MARGARET POOLE margaret.poole@enablewa.org.au	

## WINCH OPERATORS

JOHN BROHMAN	0488 123 747
HARRY BEAVER	0417 931 768
TERRY O'CONNOR	0418 931 254
DAVID DOHERTY	0418 933 517
JON BIRCH	0419 967 709

## EQUIPMENT AUDITORS

GEOFF GRIBBLE	0409 946 006
MARK SMITH	0412 947 484

## SEASON INTRO – REAR COMMODORE SAILING

Welcome to Koombana Bay Sailing Club.

We once again have a full season of sailing ahead of us from Saturday racing to Wednesday Twilight sailing plus our special events; New Year's Day, Australia Day and the S80 South West Championships. These regular events, along with a strong focus on our junior sailing programme, and a committed group of volunteers puts the Club in a good position. I thank the volunteers who dedicate their time to support our club.

This being our 70th season celebration I reflect on good work done by those before us. I am delighted to be Rear Commodore Sailing again this season as my family have been involved in this club since the beginning, holding many different positions on committee and other roles within the Club.

I look forward to seeing you on the water during the season.

**Phil Truman**

**Rear Commodore Sailing**










# SEASON 2024/2025 – SAILING PROGRAMME AND INSTRUCTIONS

## Objects of the Club:

“The objects of the Club shall be the promotion and encouragement of the sport of yachting generally, and racing between sailing yachts in particular, and the doing of all things incidental to or not inconsistent with the foregoing.”

## Glossary/Class Flags:

Div 1		Larger boats, generally over 32 ft, including S97's and trimarans.
Div 2		Medium size boats generally under 32 ft.
Div 3		Smaller boats, generally trailerable, around 20ft
JaM		Jib and Mainsail Only Division
Cats		NACRA catamarans and Mixed Catamarans
OtB		Off the Beach boats - all centerboard boats that are launched from the beach.
DNG		Dinghy sailors
CRU		Cruising Division

**Changes to the sailing programme will be advised via the e-newsletter whenever possible. Please make sure you are subscribed.**



**JB**  
SAIL REPAIRS

SERVICING THE SOUTHWEST  
BUNBURY TO AUGUSTA

**John Bell**  
PROPRIETOR

Mobile: 0419 674 066  
Email: [jb\\_sails@hotmail.com](mailto:jb_sails@hotmail.com)



## ROTARY SAIL INTO LIFE

### SAILING AND FISHING FOR EVERYONE

Every year, the Rotary Sail into Life brings opportunities and big smiles to the faces of people by taking them for a session of sailing or fishing on the waters of the beautiful Koombana Bay.

This volunteer initiative, hosted by KBSC, and supported by Enable, is currently the largest in the state and relies on local fundraising and corporate/government grants to operate.

Sailing onboard the Hansa dinghies and fishing from the accessible fishing boat is open for people with any type of disability and their families. Sailing takes place each Tuesday and Thursday, and Rotary Reel Time hosts fishing on Wednesdays.



So whether you would like to cruise around the bay, fish, or throw crab nets into the waters of Koombana Bay, or simply enjoy the company of the happy folk who join us on at the beach by the club and watch the world go by, you are welcome to join us.

There are many duties involved in the program as a volunteer, both offshore and onshore.

During the offseason and after damage inflicted by the winter storms, there has been much busyness behind the scenes.



If you would like to join us, or you know someone who might like to join as a participant or a volunteer, please contact us. Enjoy the company of wonderful happy people this summer, and a huge thanks to KBSC for your ongoing support throughout the years.



Contact: [margaret.poole@enablewa.org.au](mailto:margaret.poole@enablewa.org.au)





## WEST COAST OUTRIGGER CANOE CLUB (WCOCC)

The West Coast Outriggers Canoe Club (WCOCC) is located at Koombana Bay Sailing Club, near the Koombana footbridge.

Outrigger canoe paddling is a sport steeped in tradition and has a long and interesting history throughout the Pacific. WCOCC is the oldest canoe club in WA and was the starting point for outrigger canoe paddling in this state.

We always welcome new members at all levels of experience.

Our training nights are Monday and Wednesday during the warmer months and we also have OC1 and OC2 paddling racing on Fridays.

There is also the opportunity to organise training sessions outside of these club times.

This season we welcomed Lucy Pries as our new President supported by Terry Stripe as our Vice President. Gina Deacon will continue to do a fabulous job as our Secretary, and George and Annie Williams will continue as Treasurer and Registrar.

Our committee members are Gaynor Tuck, Bridget Bish and Graham Patterson who has been our President for the past two years.

We also have three members completing the final step to become fully accredited coaches. Gina, Annie and Graham have spent time coaching the Wavemasters Juniors under the guidance of Connie and Wayne, who had kindly offered to mentor and sign off our final stages.

Follow us on Facebook for more information

[www.facebook.com/WestCoastOutriggerCanoeClub](https://www.facebook.com/WestCoastOutriggerCanoeClub)



# TAYCOT

## SUBDIVISION & PROJECT MANAGEMENT



‘A family owned and operated consultancy proudly delivering residential subdivisions throughout the South West.’

**Kevin Coote** JP  
Director

☎ 0417 187 261 ☎ (08) 9791 5511  
✉ kevin@taycot.com.au

**Travis Taylor** BEng  
Development Manager

☎ 0407 426 712 ☎ (08) 9791 5511  
✉ travis@taycot.com.au

(08) 9791 5511

PO Box 559 Bunbury WA 6231

admin@taycot.com.au

www.taycot.com.au

JEVTELLE PTY LTD TRADING AS TAYCOT - ABN 93 309 593 615

# MEMBERSHIP FEE STRUCTURE 2024/2025

Payment to be made at time of application. (GST INC)  
Membership Year July 1, 2024 to June 30, 2025

CATEGORY	Rate/Year
Senior	\$675.00 (Includes \$50 House Support)
Crew	\$400.00 (Includes \$50 House Support)
Social (Sailing fees apply: Sat \$16, Twilight \$16)	\$164.00 (Includes \$50 House Support)
Junior	\$158.00
Student	\$277.00 (Includes \$50 House Support)
Family	Spouses and juniors of a senior member enjoy 50% discount on membership categories with sailing privileges. (plus \$50 House Support per adult)

Membership forms can be downloaded from the website - [www.koombanabay.com/membership-forms-fees](http://www.koombanabay.com/membership-forms-fees). Membership forms must be lodged in person and must be completed in full or will not be tabled at the committee meeting. All applications are presented for endorsement at the following Committee meeting.

If you require a proposer/seconders please come into the Club and meet some members of the Committee, Wednesday nights (Oct-April), Friday nights (all year around) and Saturday afternoons (Oct-April) are the best times to attend.

## MEMBERS BAR & RESTAURANT

Experience seaside dining like never before at the KBSC

With our prime location on the shores of Koombana Bay, you'll savour food and drinks with a waterfront view, complete with stunning sunsets.



We're family-friendly, offering a large alfresco dining area, huge licenced grassed space and a beachside play area for kids.

Accessibility is a priority, with wheelchair-friendly facilities and ample parking.

KBSC Members can bring up to 5 guests, enjoying a 20% bar discount. Explore our fully stocked bar featuring an array of local wines and cold tap beers to complement your meal.

Wednesday Night Twilight Sailing sees our Food Truck Family offering meals for sailors and socials members during the sailing season, (approx. Oct to April). Our canteen is also open on Saturday afternoons during the sailing season

# SAIL TRAINING

Sailing is a rewarding skill that can take a few weeks to learn and a lifetime to master. KBSC offers pathways to get started in sailing in both dinghies and keelboats.



## Start Sailing in Dinghies

Koombana Bay Sailing Club offers multiple accredited training options for all ages.

Tackers is a fun introductory, games-based sailing program designed for kids aged 7-12 years-old.

Dinghy courses (Start Sailing 1 & 2) are tailored for children, teens and adults and involve sailing on small exhilarating boats.

OutThere Sailing is a program that has been specifically designed for teenagers from 12 to 17 years old. OutThere Sailing is perfect for teens who want to try sailing and powerboating in a non-competitive, social and fun setting.

All courses are designed by Australian Sailing and are provided by accredited instructors. See our website [www.koombanabay.com/sail-training](http://www.koombanabay.com/sail-training) or follow our main Facebook page or our Koombana Bay Junior Sailing Facebook page for dates and to register.



After completing the Tackers and/or Start Sailing courses, training continues with Saturday morning fleet sessions.

These run in fleets according to experience.

START SAILING FLEET (Beginner) - 9.00am - 10.00am

BETTER SAILING FLEET- (Intermediate) 10.00am - 11.30am

START RACING FLEET (Experienced) - 2.00pm



KBSC encourages sailors to compete at higher levels. Advanced coaching options exist that can help you prepare for competition at state, national and world levels if you desire.

## Start Sailing in Keelboats

Koombana Bay Sailing Club offer several pathways to get started in keelboat sailing;

### **Keelboat Sail Training**

All formal keelboat training is completed on 'Bluebird' an S80 (an 8 metre, Swarbrick one-design yacht built for racing and cruising)

The Start Crew/Start Helm Keelboat courses are a great way to learn keelboat sailing in a short amount of time. The courses are run over approx. 5 days by Australian Sailing accredited instructors and cover sailing theory, crewing, helming and safety.

All equipment and safety gear is provided.

See website [www.koombanabay.com/sail-training](http://www.koombanabay.com/sail-training) to register your interest.

Dates will be published online once confirmed. More courses will be added depending on demand so if you are interested please register your interest online.

### **Twilight Sailing**

Many sailors get their first taste of sailing on Wednesday night twilight sails. Non-Members and Social members must register for a 'SailPass' Temporary Sailing Membership and present the receipt at the Clubhouse to register.

A SailPass is \$16 per event. Register using the QR Code or visit

[www.koombanabay.com/learn-to-sail](http://www.koombanabay.com/learn-to-sail)

(This is a very popular event and places cannot be reserved or guaranteed)



### **Crewing**

Our current skippers are always looking for crew to sail on Saturday afternoons, and jumping on board is a great way to learn. Experience isn't always necessary on the keelboats, and watching what happens will have you picking things up in no time. To race on Saturdays you will need to join as a member, but we offer you an opportunity to register as a Temporary Sailing Member via SailPass for a maximum of 6 races, after this our crew membership is a great option. Crew membership covers all sailing fees for the season and gives you access to all Club facilities, provides you with a 20% discount on drinks and allows you to invite up to 5 guests down for a drink and meal.

(Max 6 SailPass fees will be deducted from your membership fee on joining as a full member)

There are many ways to find a crew to sail with;

- Ask at the Sailing Office on Saturday afternoons around noon.
- Stop by the bar on Wednesday or Friday nights and chat with other sailors at the bar.
- Register online

[www.koombanabay.com/memberships](http://www.koombanabay.com/memberships)

- A crew board is available near the outside

ablution blocks, so if you are looking for crew or looking to sail, please leave your details for others to see.

The board will be cleared regularly so please keep watching and updating as required.



## CRUISING IN COMPANY

Skippers who love sailing as well as racing are encouraged to join a cruise in company with other like-minded sailors. Cruising yachts are encouraged to cruise in company, to add to the adventure and minimise the risks associated with ocean sailing.

KBSC yachts have regularly done the pilgrimage to Rottneest early in the New Year. Weather dependent, this is a great holiday well within the grasp of average skippers and KBSC keel boats. The general passage looks like this:

**Day 1-** Leave Bunbury on Saturday morning and stay overnight at the Mandurah Marina. A great place to share a meal with fellow yachties.

**Day 2-** Sail past the back of Garden Island, swim at Carnac Island, and finish with a broad reach into Thompsons Bay for an ale at the Quokka Arms.

**Day 3, 4 and 5** is all about swimming, fishing, and a circumnavigation of the island.

**Day 6** – Rottneest to Dawesville for an over-night stay.

**Day 7** – Dawesville back to Bunbury. Sailors can also elect to do the direct passage from Rottneest back to Bunbury.

Ideally 5 or 6 boats share this annual trip. The date is still flexible, but Rottneest is less crowded after the school holidays and weather is usually more favourable close to the end of March.

### **Other cruising options closer to home:**

During good weather, many members enjoy an overnight stop-over within sailing distance of Koombana Bay. This can be at the Mandurah Marina or Dawesville Marinas, Port Geographe Marina, Busselton, Dunsborough Bay Yacht Club, and Quindalup.

Please note the Club does not coordinate these voyages and as such, will not have rescue craft in the water, or manned radios.

Any questions about joint cruises out of Bunbury, or trips being planned privately amongst yachts can be directed to regular cruiser Jon Birch on 0419 967 709.



## WOW (Women on Water) at KBSC

A new initiative this season at KBSC is WOW - the promotion of the knowledge of sailing amongst female members of our club.

“Women on Water” will include a number of on and off-water sailing activities across the later half of the season. These will be scheduled to be flexible, dependant on weather and will be advertised on the club Facebook page and in the weekly e-newsletter.

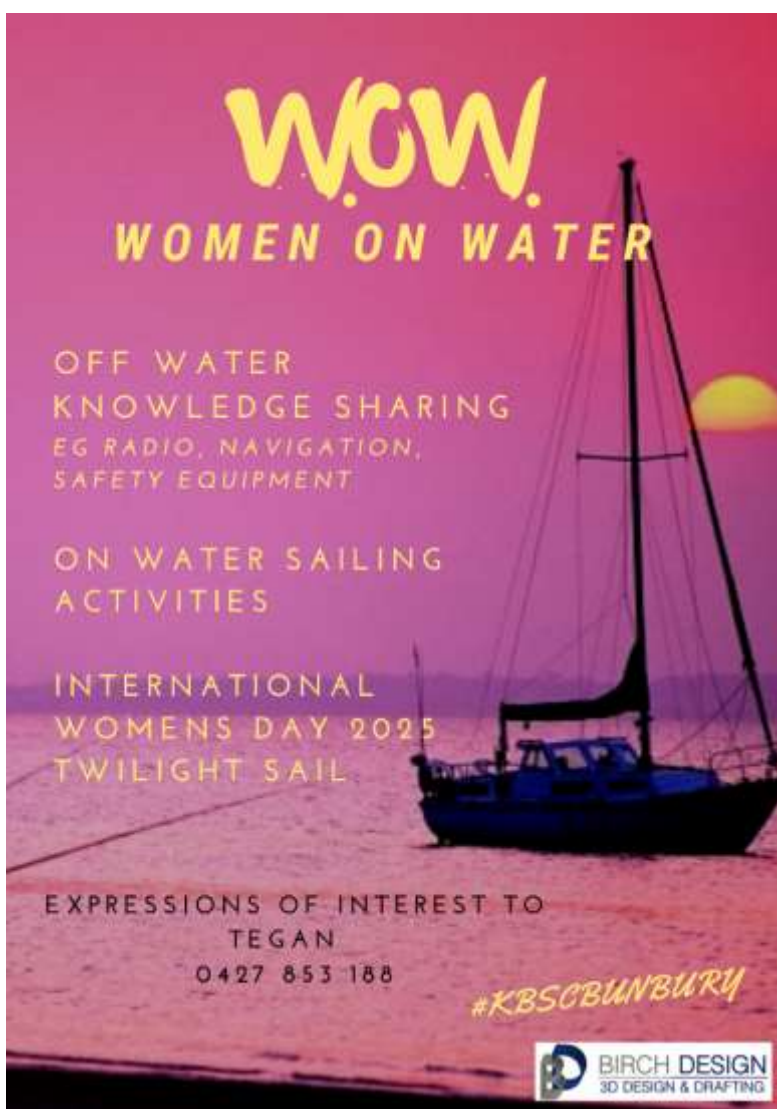
All crew, skippers and yachts who are current members of KBSC are encouraged to participate, with a minimum of 1 Female Crew member aboard for on-water sailing activities.

Off-water sessions for female KBSC members may include topics such as radios, safety equipment, navigation, man overboard, trimming, anchoring, bad weather, splicing etc.

Points will be awarded for sailing and attendance in WOW, with end of season prizes sponsored by Birch Design – the ever-famous dinner for two at The Lighthouse, bottle of champagne and frozen chook.

Participants must be eager and committed to attend, with application to WOW being a submission of up to three things you want to know about sailing. Please email your application to [Tegan\\_madson@hotmail.com](mailto:Tegan_madson@hotmail.com).

The first Off Water WOW event is scheduled for 10<sup>th</sup> January 2025.



## FUNCTION HIRE

Koombana Bay Sailing Club has a number of interior and exterior areas to hire, making it ideal for any function or event catering for between 20 to 450 people.

This makes KBSC ideal for any occasion, from conferences, business meetings and lunches, to weddings, engagements, birthdays, wakes and sundowners.

The view from the function room is one of the most stunning in the South West of Western Australia, taking in Bunbury's waterfront, harbour and beaches.

Floor to ceiling glass doors open out to a grassed area which meets a pristine beach, where guests can mingle while taking in panoramic views.

The spacious function room can be configured into any setting or floor plan to meet your event requirements, with sound and conferencing facilities available.

Our licenced bar services both areas; with our internal function room opening out onto an undercover licenced alfresco area.

Koombana Bay Sailing Club has a number of delegate and wedding packages available or can tailor one to suit.

Member discounts may apply.

If you would like further information please contact our Function Coordinator on  
Mobile: 0499 023 995,

Email: [functions@koombanabay.com](mailto:functions@koombanabay.com)





## CUPRUM DISTILLERY PHOTO OF THE SEASON 24/25

Last season, there was a secret photo competition, this year it's formal! Send your best photos from your time at the Club (on and off the water) to the KBSC Facebook page via message to be in the running. Photos provided will be used on the Club Facebook page, website and in the e-newsletter as required.



# CUPRUM DISTILLERY

## CLUB MERCHANDISE

Koombana Bay Sailing Club is partnered with Gill Marine to provide you with the highest quality sailing gear. Special orders for Gill merchandise are placed throughout the year, so please keep an eye on the Club newsletter for order dates. We also stock a casual range of t-shirts, hats and other accessories.



All stock is displayed at the Clubhouse, just ask the office or bar staff for the key to the cabinet.




# MarinePlus

## KBSC CLUB CHAMPIONSHIPS


Championship heats will be run for any class that can present three boats of one design for each heat. If there are classes interested in holding Club Championship heats, then please talk to the RC Sailing to have these included. Any modifications will have to be approved by both the RC Sailing, and the remainder of the boats competing in the class.

As per the Sailing Instructions a Club Championship series shall be scored as below:

- a) When fewer than 5 races have been completed, a boats series score will be the total of her races scores.
- b) When 5 or more races have been completed, a boats series score will be the total of her races scores excluding her worst score.
- c) When 8 or more races have been completed, a boats series score will be the total of her race scores excluding her worst 2 scores.
- d) Championship points go to the boat in each heat.
- e) Skippers may apply to the race committee for dispensation from SI 17.2(d) in exception circumstances, ie: sale or damage to boat.




**FOR WHEN RESULTS MATTER**



**ASSET RELIABILITY INSPECTIONS**

- **Weld Inspection**
- **Non-Destructive Testing**
- **Heavy Machinery Inspection**
- **Pressure Vessel Inspection**
- **Pressure Vessel Design Verification**

📞 08 9725 7550 🌐 [WWW.ARI.COM.AU](http://WWW.ARI.COM.AU)  
✉ [INFO@ARI.COM.AU](mailto:INFO@ARI.COM.AU)



## BOATING AND NON-PARTICIPATION FEE SCHEDULE

CATEGORY	PARTICIPATING BOAT	NON-PARTICIPATING BOAT
As at 01 July 2024	Rate/Year	Rate/Year
Hard stand	\$366	\$732
Hard stand catamaran over 5m beam	\$476	\$951
Off beach sailing dinghy outside 6mths	\$123	\$246
Off beach sailing dinghy outside 12mths	\$245	\$490
Sailing dinghy storage under cover	\$256	\$490
Additional winch movements	\$60	
Mooring fees	\$319	

Paid up senior (including life) or junior members may store their boat, jinker and/or trailer within the designated boat storage areas at KBSC for the prescribed fee.

(Note that boats, trailers and jinkers are left at KBSC at the owner's risk. KBSC is not responsible for any loss or damage.)

Members who require a mooring and/or space on the hardstand, or use of the club winch are required to read and agree to the 'Boat Storage & Participation Policy' and the 'Mooring' and 'Winch' policy documents which are available from the Club or can be downloaded from the club website [www.koombanabay.com/around-the-club](http://www.koombanabay.com/around-the-club).

All applications for mooring and hardstand use must be forwarded through the Club office.

A non-participation levy will be charged to members with a non-participating boat at the end of each season.



# 2023 -2024 Awards

## Tim Lee Steere Encouragement Award

Zoe Knight

## Opening Day Commodores' Trophy

(Sponsored by Judy Talbot & Malcolm Bryant)

– Short Fuse

## Consistency Racing - Series 1

### *Division 1*

1<sup>st</sup> Thirsty Work

### *Division 2*

1<sup>st</sup> Calamari Run

### *Div 3/JaM*

2<sup>nd</sup> Cooee 38

1<sup>st</sup> Tsunami 2

### *Mixed Multi*

1<sup>st</sup> Thylacine

## Consistency Racing – Series 2

### *Division 1*

1<sup>st</sup> Short Fuse

### *Division 2*

1<sup>st</sup> En Garde

### *Div 3/JaM*

3<sup>rd</sup> – Bodega

2<sup>nd</sup> Tsunami 2

1<sup>st</sup> Perfect Balance

### *Mixed Multi*

1<sup>st</sup> Chelsie

## Consistency Racing – Series 3

### *Division 1*

1<sup>st</sup> Short Fuse

### *Division 2*

1<sup>st</sup> Calamari Run

### *Division 3/ JaM*

3<sup>rd</sup> Wayward

2<sup>nd</sup> Cooee 38

1<sup>st</sup> Empty Pockets

### *Dinghies*

1<sup>st</sup> Thylacine

## Dick Anderson Cruiser Consistency

### Trophy

Div 1 - Courtesan

Div 2 – Calamari Run

### Consistency Trophy

JaM – Tsunami 2

Mixed Multi - Thylacine

## Bill and George Chambers Trophy for Best Overall Junior - Ashlin Pumphrey

## Horry and Joan Irwin Award for Best Club

Person – Ian Wilson

## Crew Person of the Year Award – Leanne

Stirling

## Rookie Skipper of the Year Award –

Kim Shepherd

## Extended Bay Series

1<sup>st</sup> Thirsty Work

## Inner Bay Series

2<sup>nd</sup> Cooee 38

1<sup>st</sup> En Garde

## Twilight Trophy

**Third Place** - Thirsty Work, Bodega, Courtesan

**Second Place** - Crews Control, XStarSea, Short Fuse, Atomic Blonde, Still Dreaming

**First Place** - Wayward, Perfect Balance

## Naturaliste Yachts and Chandlery Stayers'

### Series

3<sup>rd</sup> Empty Pockets

2<sup>nd</sup> Thirsty Work

1<sup>st</sup> White Noise



## OFFICER OF THE DAY ROSTER

Officer of the Day roster is subject to last minute changes due to availability of committee members.

Sat 12/10	Ian Anderson	Opening Day Commodores' Cup
Sat 19/10	Tegan Madson	Consistency Series 1
Sat 26/10	Peter Swanson	Consistency Series 1
Sat 02/11	Lisa Cowell	Consistency Series 1
Sat 09/11	Phil Truman	Extended Bay/Inner Bay Racing Series Heat 1
Sat 16/11	Tim Sparrow	Consistency Series 1 - Handicap Start
Sat 23/11	Peter Midgelow	Consistency Series 1 - Discover Sailing Day
Sat 30/11	Anthony Ness	Consistency Series 2
Sat 07/12	Dale Clemons	Extended Bay/Inner Bay Racing Series Heat 2
Sat 14/12	Kim Shepherd	Consistency Series 2
Sat 21/12	Kelly Paul	Consistency Series 2 - Handicap Start
Sat 04/01	Peter Swanson	Consistency Series 2
Sat 11/01	Jak Kelly	Consistency Series 2
Sat 18/01	Ian Anderson	Tower Start Bay Race - Dunsborough Dash
Sat 25/01	Seaton Field	Tower Start Bay Race - S80 SW Championships
Sun 26/01	Phil Truman	S80 SW Championships
Mon 27/01	Jak Kelly	Australia Day special event
Sat 01/02	Tegan Madson	Consistency Series 3
Sat 08/02	Dale Clemons	Extended Bay/Inner Bay Racing Series - Heat 3
Sat 15/02	Tim Sparrow	Tower Start Bay Race All Fleets (Race Week)
Sat 22/02	Peter Midgelow	Consistency Series 3 - Handicap Start
Sat 08/03	Kelly Paul	Extended Bay/Inner Bay Racing Series - Heat 4
Sat 15/03	Anthony Ness	Consistency Series 3
Sat 22/03	Kim Shepherd	Consistency Series 3
Sat 29/03	Seaton Field	Consistency Series 3 - Handicap Start
Sundays x 4	David Doherty	Naturaliste Stayers Series



# OCTOBER 2024

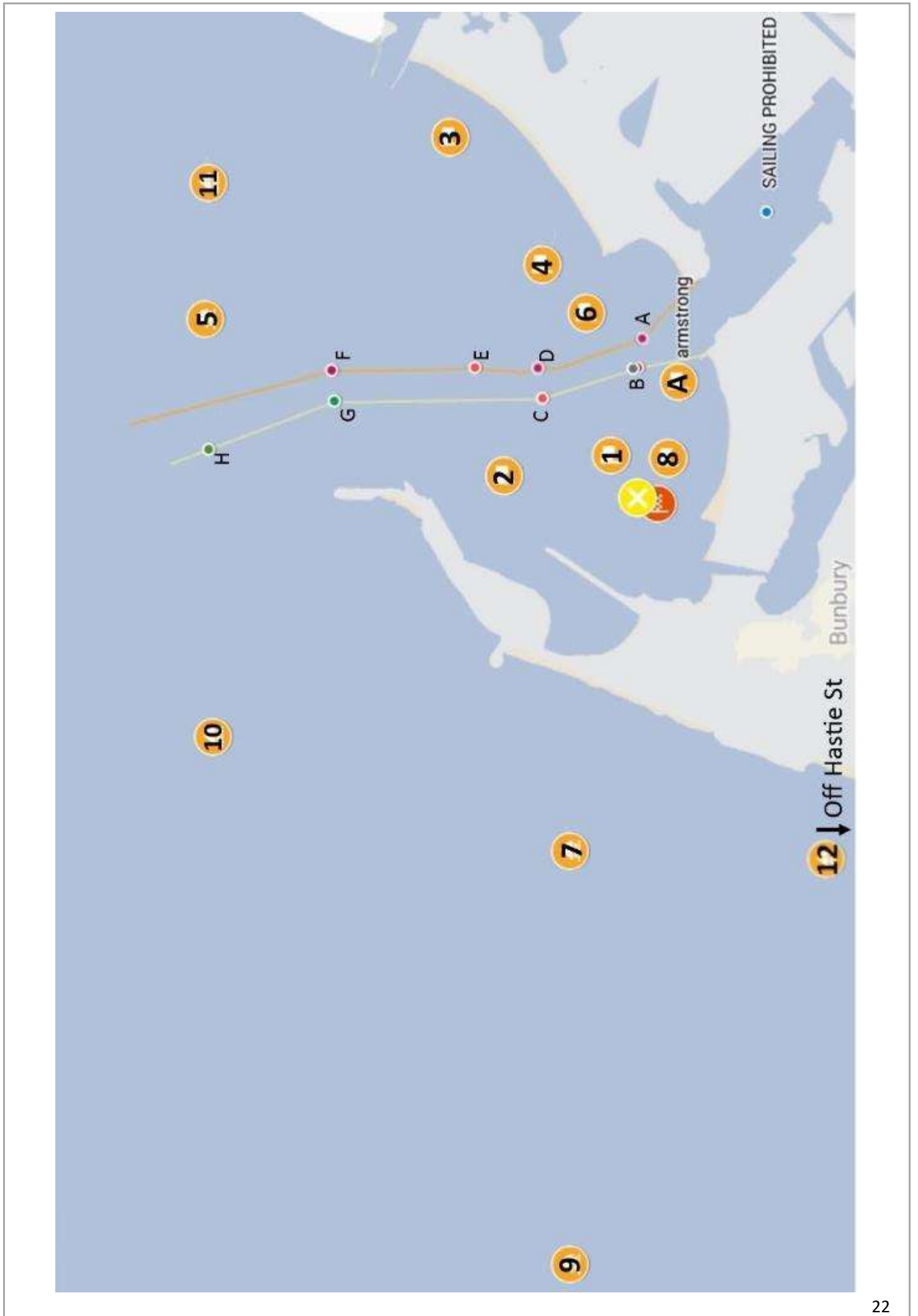
Saturday 12 <sup>th</sup>	<p><u>Opening Day - Ceremony from 12.00pm.</u> 12.30pm Lunch available to purchase for lunch <b>Commodores Cup Race</b> follows a 2pm Sail Past. <u>Sponsored by Judy Talbot and Malcolm Bryant</u> 5.00pm KBSC 70th Anniversary Dinner</p>
Saturday 19 <sup>th</sup>	<p><u>Series #1 – Brecken Health</u> Dinghy Fleet Training Commences (9am, 10am, 2pm) 2.00pm – Consistency Racing (All Fleets)</p>
Wednesday 23 <sup>rd</sup>	<p>5.30pm - Twilight Sailing <u>Social Event</u> - Flanno Night (wear your favourite flannelette shirt)</p>
Saturday 26 <sup>th</sup>	<p><u>Series #1 – Brecken Health</u> 2.00pm - Consistency Racing (All Fleets)</p>
Wednesday 30 <sup>th</sup>	<p>5.30pm - Twilight Sailing</p>



*south west subsea*  
**Commercial Diving Services**

- Busselton based family ran business
- Equipped and insured for all types of subsea work
- Registered DPAW and DOT mooring contractor
- We maintain over 200 private and commercial moorings in Geographe Bay and surrounds
- Competitive rates, enquire today

Cat Rutter  
0404229084  
southwestsubsea@gmail.com



# NOVEMBER 2024

Saturday 2 <sup>nd</sup>	<u>Series #1 – Brecken Health</u> 2.00pm – Consistency Racing (All Fleets)
Wednesday 6 <sup>th</sup>	5.45pm - Twilight Sailing <u>Social Event - Movember</u>
Saturday 9 <sup>th</sup>	12.00pm - Extended Bay (All eligible category 5 nominated boats) 2.00pm - Inner Bay (Div 1, 2, 3, JaM) 2.00pm – Consistency Racing (Cats, OtB, DNG)
Wednesday 13 <sup>th</sup>	6.00pm - Movember Twilight Sailing
Saturday 16 <sup>th</sup>	<u>Series #1 - Handicap Start – Brecken Health</u> 2.00pm – Consistency Racing (All Fleets)
Wednesday 20 <sup>th</sup>	6.00pm - Movember Twilight Sailing
Saturday 23 <sup>rd</sup>	<b>Discover KBSC Day</b> <u>Series #1 – Brecken Health</u> 2.00pm – Consistency Racing (All Fleets) (Please be aware there may be a delayed start to accommodate Discover Sailing Day)
Wednesday 27 <sup>th</sup>	6.00pm - Movember Twilight Sailing
Saturday 30 <sup>th</sup>	<u>Series #2 – Perkins Builders</u> 2.00pm - Consistency Racing (All Fleets)





# DECEMBER 2024

Wednesday 4 <sup>th</sup>	6.00pm - Twilight Sailing
Saturday 7 <sup>th</sup>	12.00pm - Extended Bay (All eligible category 5 nominated boats) 2.00pm - Inner Bay (All other boats) 2.00pm – Consistency Racing (Cats, OtB, DNG)
Wednesday 11 <sup>th</sup>	6.00pm - Twilight Sailing
Saturday 14 <sup>th</sup>	<u>Series #2 – Perkins Builders</u> 2.00pm - Consistency Racing (All Fleets)
Wednesday 18 <sup>th</sup>	6.00pm - Twilight Sailing <u>Social Event</u> - Xmas Dress Up
Saturday 21 <sup>st</sup>	<u>Series #2 - Handicap Start – Perkins Builders</u> 2.00pm - Consistency Racing (All Fleets)



OCEAN WEST  
charters



[www.oceanwest.net.au](http://www.oceanwest.net.au)

# JANUARY 2025

Wednesday 1 <sup>st</sup>	New Year's Day - Twilight Sail <u>Social Event</u> - New Year's Day Party - TBA
Saturday 4 <sup>th</sup>	<u>Series #2 – Perkins Builders</u> 2.00pm - Consistency Racing (All Fleets)
Wednesday 8 <sup>th</sup>	6.00pm - Twilight Sailing
Friday 10 <sup>th</sup>	5.30pm – WOW – Women On Water
Saturday 11 <sup>th</sup>	<u>Series #2 – Perkins Builders</u> 2.00pm - Consistency Racing (All Fleets)
Wednesday 15 <sup>th</sup>	6.00pm - Twilight Sailing
Saturday 18 <sup>th</sup>	9.00am - Dunsborough Dash - Overnight Stay 2.00pm – Tower Start Bay Race (All other boats)
Sunday 19 <sup>th</sup>	9.00am - Dunsborough Dash - Return from Dunsborough
Wednesday 22 <sup>nd</sup>	6.00pm - Twilight Sailing <u>Social Event</u> - Water Fight Night (please no balloons)
Saturday 25 <sup>th</sup>	Southwest Championships (S80) 2.00pm - Tower Start Bay Race (All Fleets)
Sunday 26 <sup>th</sup>	Southwest Championships (S80)
Monday 27 <sup>th</sup>	Australia Day Special Event
Wednesday 30 <sup>th</sup>	6.00pm - Twilight Sailing

**CHRIS ROWE & CO**

# FEBRUARY 2025

Saturday 1st	<u>Series #3 – TAYCOT</u> 2.00pm - Consistency Racing (All Fleets)
Wednesday 5 <sup>th</sup>	6.00pm - Twilight Sailing
Saturday 8 <sup>th</sup>	12.00pm - Extended Bay (All eligible category 5 nominated boats) 2.00pm - Inner Bay (All other boats) 2.00pm – Consistency Racing (Cats, OtB, DNG)
Wednesday 12 <sup>th</sup>	6.00pm - Twilight Sailing <u>Social Event</u> – Hawaiian Night - Cuprum Distillery Dark & Stormy
Saturday 15 <sup>th</sup>	<u>Geographe Bay Race Week</u> 2.00pm – Tower Start Bay Race (All other boats)
Wednesday 19 <sup>th</sup>	6.00pm - Twilight Sailing
Saturday 22 <sup>nd</sup>	<u>Series #3 - Handicap Start – TAYCOT</u> 2.00pm - Consistency Racing (All Fleets)
Wednesday 26 <sup>th</sup>	6.00pm - Twilight Sailing



EC.000264

BUNBURY WA ☎ 08 9725 6020

email: [admin@batleyelectrics.com.au](mailto:admin@batleyelectrics.com.au)

# MARCH 2025

Wednesday 5 <sup>th</sup>	5.45pm - Twilight Sailing <u>Social Event</u> - Ladies Twilight, everyone to wear pink.
Saturday 8 <sup>th</sup>	12.00pm - Extended Bay (All eligible category 5 nominated boats) 2.00pm - Inner Bay (All other boats) 2.00pm – Consistency Racing (Cats, OtB, DNG)
Wednesday 12 <sup>th</sup>	5.45pm - Twilight Sailing
Saturday 15 <sup>th</sup>	<u>Series #3 – Priority Management Pty Ltd</u> <u>2.00pm - Consistency Racing (All Fleets)</u>
Wednesday 19 <sup>th</sup>	5.30pm - Twilight Sailing
Saturday 22 <sup>nd</sup>	<u>Series #3- Priority Management Pty Ltd</u> 2.00pm - Consistency Racing (All Fleets)
Wednesday 26 <sup>th</sup>	5.30pm - Twilight Sailing
Saturday 29 <sup>th</sup>	<u>Series #3 - Handicap Start – CHRIS ROWE &amp; CO</u> 2.00pm - Consistency Racing (All Fleets)



## WINDWARD MARINE

**Yacht Share / New Boats / Used Boats**



[www.windwardmarine.com.au](http://www.windwardmarine.com.au)

# APRIL 2025

<b>Wednesday 2<sup>nd</sup></b>	5.30pm - Twilight Sailing – Final Twilight
<b>Sunday 6<sup>th</sup></b> (race times subject to wind conditions on the day)	10.00am - Naturaliste Stayer Series Racing 12.00pm - Lunch 1.30pm - Naturaliste Stayer Series Racing
<b>Sunday 13<sup>th</sup></b> (race times subject to wind conditions on the day)	10.00am - Naturaliste Stayer Series Racing 12.00pm - Lunch 1.30pm - Naturaliste Stayer Series Racing
<b>Sunday 20<sup>th</sup></b>	Easter Sunday
<b>Sunday 27<sup>th</sup></b> (race times subject to wind conditions on the day)	10.00am - Naturaliste Stayer Series Racing 12.00pm - Lunch 1.30pm - Naturaliste Stayer Series Racing
<b>Sunday 4<sup>th</sup> May</b> (race times subject to wind conditions on the day)	10.00am - Naturaliste Stayer Series Racing 12.00pm - Lunch 1.30pm - Naturaliste Stayer Series Racing



# OTHER DATES

<b>Saturday 14<sup>th</sup> June</b>	<u>End of Season Party (Presentation Night)</u>
<b>Tuesday 19<sup>th</sup> August</b>	<u>Annual General Meeting</u>

## STARTING PROCEDURES AND RULES

If you're new to sailing, or just never really learned the starting procedure, we've taken the time to outline the basics here. Please take the time to read the information below, it will make everyone's life easier.

### CLUB STARTING PROCEDURE:

Each of these 4 stages is accompanied by a single audible signal from the start boat.

5 min warning - YOUR class flag is raised

4 min warning - Blue Peter (Code P flag) is raised

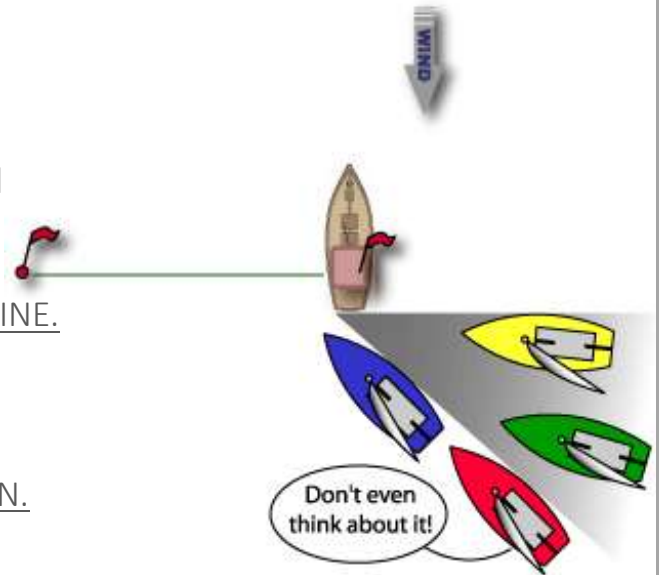
1min warning - Blue Peter (Code P flag) is dropped

START / GO YOUR class flag is lowered

IF YOU ARE NOT STARTING, PLEASE STAY OFF THE LINE.

### NO BARGING IN ON THE START LINE:

IF YOU ARE IN THE GREY AREA, YOU CAN'T BARGE IN.



For all rules see 2021-2024 Racing Rules of Sailing at <https://www.sailingresources.org.au/class.../racing-rules/>

*Naturaliste*   
Yachts And Chandlery

Agent for Ronstan, Lanex Ropes, Harken and Hempel

Small but comprehensive range available off shelf

Small Fabrication Work – Aluminium & Stainless Steel

Fast, effective ordering to suit your needs

**lanex**  
YACHTING ROPES

**RONSTAN**



**HEMPEL**

**HARKEN**<sup>®</sup>

At Koombana Bay Sailing Club - Anchorage Cove Bunbury WA  
Contact David - 0418 933 517 - [www.naturalisteyc.com](http://www.naturalisteyc.com)

## EXTENDED BAY RACING 2024/2025

### Keel Boats with Category 5 Safety Certificate

An Extended Bay Series will be run as a separate, standalone series (not affecting overall season consistency or the Dick Anderson Trophy).

Nominated Keel Boats are required to have a valid Category 5 Safety Certificate as certified by the Club Equipment Auditor.

Competing yachts will be combined for the Extended Bay series with prizes being awarded as per the Sailing Instructions (SI 27.1) included in this programme. This is a handicap event.

The start time will be 1200hrs on the dates scheduled in the sailing programme.

Nominations will close at 1100hrs.

Courses will be determined on the day with consideration given to the forecast conditions.

Competing craft are required to sign on and will be provided with the course at that time.

## INNER BAY RACING 2024/2025

For those keel boats choosing not to compete in the Extended Bay Series, a parallel standalone series will be conducted within the Bay (not affecting overall season consistency or the Dick Anderson Trophy).

Competing yachts will be combined for the Inner Bay Series with prizes being awarded as per the Sailing Instructions (SI 27.1) included in this programme. This is a handicap event.

The start time will be 1400hrs. Nominations will close 10 minutes prior to the starting signal.

Competing yachts will be required to nominate their sail configuration before the first race (JaM, spinnaker etc) and are required to retain that configuration for the duration of the series. This is to enable consistent handicapping.

Courses will be determined on the day with consideration given to the forecast conditions.

Competing craft are required to sign on and will be provided with the course at that time.



# SHIPPING AND TUG BOAT MOVEMENTS

The safety of our members is paramount and a good working relationship with Southern Ports Bunbury is crucial as we share the waterway.

For the purpose of this notice, a 'shipping movement' is classed as any vessel in excess of 49m with a pilot on board, and published in the Port's daily schedule:

[www.southernports.com.au/shipping/bunbury/current-list](http://www.southernports.com.au/shipping/bunbury/current-list)

The 'shipping channel' is defined as per the diagram. The northern entry to the channel is at Beacon 3.

## Requirements of KBSC Members

Never pass in front of a ship which has entered the shipping channel, whether racing or sailing socially. Always leave the shipping channel immediately if a ship's horn blows (regardless of whether you believe it to be in the channel or not). Do not continue sailing to your next mark unless that is indeed the quickest route to exit the channel.

Always leave a minimum *one* ship's length if passing through the shipping channel behind a ship.

Always follow instructions however communicated from a race management boat, pilot boat, a tug or any other Port Authority personnel.

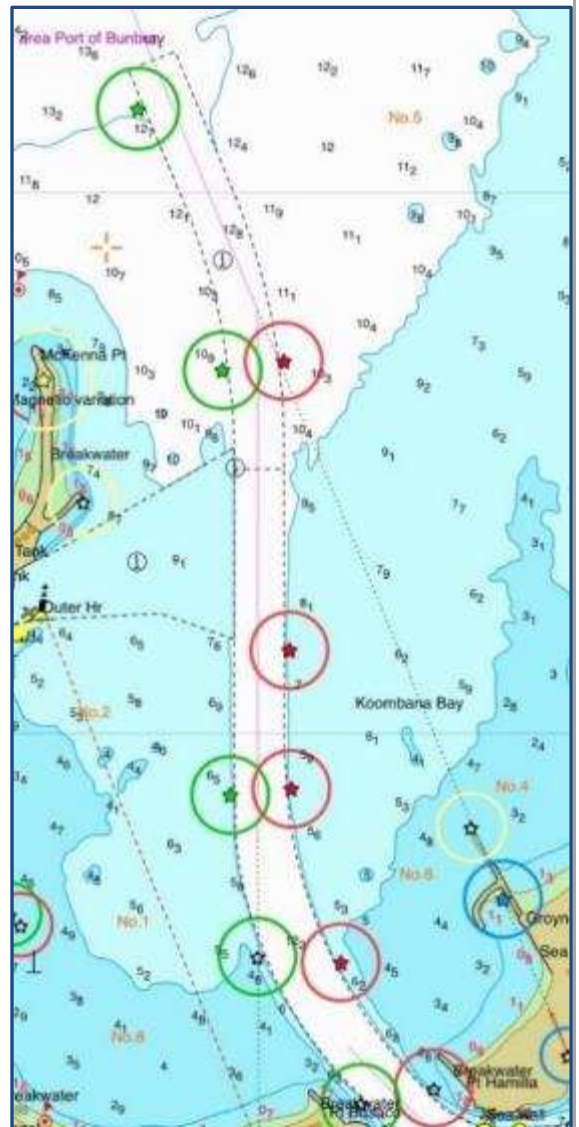
Always report incidents to the Rear Commodore Sailing or Officer of the Day as soon as is practical.

## Breach of the Requirements

Situations where members do not appear to have complied with these requirements will be referred to the Protest/Rules Committee and the competing yacht may be disqualified. Reports of possible breaches can be made by Race Management or competing yachts through a protest, or the Bunbury Port Authority.

## Contacts: Bunbury Port Authority

- The base station is "Port of BUNBURY", call sign - VH6HZJ.
- Station monitors VHF Channel - 16 (156.8 Mhz).
- General Enquiries - [pilot@southernports.com.au](mailto:pilot@southernports.com.au) or contact the Duty Pilot 08 9729 6527





## Tug Boat Movements During Racing/Social Sailing

Port Operations require that tug boats move to and from shipping movements. Tugs need to use the deep water channel to access the Inner Harbour and have rights within the channel. It can also be difficult for tug boat Masters to anticipate the movement and course changes of numerous yachts.

In order to minimise the impact of tug boat movements on sailing activities, agreement has been reached with the Port Authority and tug boat operator's that tugs moving to and from shipping movements will proceed along the channel on a consistent course and at a reduced speed of 5 knots.

It is incumbent upon yachts to stay out of the way of tug boat movements in the channel.



### IMPORTANT SAFETY NOTE

### EMERGENCY SERVICES PICK UP/TRANSFER POINT

Should a member of your crew require emergency medical assistance, please call 000 with the condition or symptoms and advise them to meet your craft at the Service/Refuelling Jetty in Casuarina Harbour (Outer Harbour). Advise the Operator that both road and helicopter access is available at 33 18.647 SOUTH / 115 38.428 EAST.

Also notify the Club of any emergency on VHF 72.

Bunbury Sea Rescue is also available on VHF 16 for emergencies only.

All competing boats should have a listening watch on VHF 72.

## Sailing Instructions

1. **Rules:** KBSC Club races will be governed by the current racing rules of sailing (Blue Book), its prescriptions and these KBSC sailing instructions.
2. **Notices to Competitors:** Notices to competitors will be posted on the KBSC official notice board located near the Race Control Office and may be sent via email.
  - 2.1 Communications: Race Control monitors and operates on VHF CH 72 all boats should keep a listening watch on this channel while racing.
3. **Changes to sailing instructions:** Any Change to sailing instructions made on shore will be posted on the official notice board two hours before the commencement of the days racing, except that any change to the schedule of races will be posted by 1800 on the day before it will take effect.
4. **Signals made ashore:** Signals made ashore will be displayed from the flagpole in front of the KBSC office. When flag AP is displayed ashore, 1 minute is replaced with 'not less than 30 minutes' in the race signal AP.
5. **Schedule of races:** The current year KBSC Sailing Programme forms part of these sailing instructions and shall be carried on board your vessel at all times.
6. **Class Flags:** Class signals as described on KBSC club course sheets.
7. **Racing area:** As described in the current year KBSC Season Programme.
8. **The Courses:** Club course sheets form part of these sailing instructions and are available from the Race Control Office.
9. **Marks:** 1-12 including ARMSTRONG are orange pole buoys with a BLACK Flag. Coordinates specified in programme.
10. **Prohibited sailing:**
  - 10.1 Passing through a start line after having started correctly.
  - 10.2 Passing through a finish line after your class warning signal, except to finish.
  - 10.3 Passing between the power house spit post and the power house groin. See course map in this booklet for relative location.
  - 10.4 Commercial shipping. Boats MUST NOT enter the shipping channel ahead of a ship (>49m long) once the ship has entered the channel and must not cross within one ship length astern of a ship. Ships entering the channel may or may not sound one long blast on the ships horn to indicate to boats that the ship is entering the channel.
  - 10.5 Any yacht already in the channel when a ship enters the channel must immediately leave the channel by the fastest possible route to the side. See also 'Shipping and Tug Boat Movements'.
11. **Nominations:** All yachts must nominate for each race, or set of back-to-back races by completing the nomination form and by paying the required fee.
  - 11.1 Nominations close 10 minutes prior to your class warning signal, except for Extended Bay Races which closes at 1100hrs on the day of racing.
  - 11.2 Any yachts that fail to nominate according to this instruction will be deemed to be a non-starter and scored accordingly.
  - 11.3 The nomination fee for seniors is \$5 per boat and \$2 for juniors per boat.
12. **The Start:**
  - 12.1 Races shall be started by using RRS rule 26.
  - 12.2 The starting line will be between a staff displaying an orange flag on the race committee signal boat at the starboard end and a buoy flying an orange flag at the port end.
  - 12.3 A distance mark may be permanently streamed from the race committee signal boat from the time of the warning signal until all boats have started. The buoy is deemed to be a permanent part of the committee boat and any boat touching or passing between it and the committee boat shall be deemed to have touched the committee boat.
  - 12.4 Boats whose warning signal has not been made shall avoid the starting area during the starting sequence for other races.
  - 12.5 A boat starting later than 4 minutes after her starting signal shall be scored 'did not start' without a hearing. This changes rule A4.

12.6 Handicap starts Code flag N will be used to show a Handicap Start.

**13. Shortening Course:** If the race committee signals a shortened course (displays flag “S” with two sound signals together with the ‘Class’ flag of the boats affected), near the mark of the course. All boats affected will complete the course up to this mark, pass on the correct side of it and then for courses using a Tower Finish; sail to mark 8 (passing it to starboard) and then to the finish line, in an east to west direction OR for courses using a boat finish; sail to the boat finish line crossing in the direction specified in the course.

**14. The finish:**

14.1 Unless otherwise specified, the finish line for all yachts shall be an imaginary line between the KBSC Race control tower and the outer of the two finish marker buoys (yellow cross marker).

14.2 All boats must pass between the inner finish marker buoy and the outer club mooring marker (yellow cross marker) to have finished correctly.

**15. Penalty System:** For all classes of boats >3.65m long, rule 44.1 is changed so that Two Turns Penalty is replaced by the One Turn Penalty.

**16. Time Limit:** The time limit for finishing races on courses around club marks is three and a half hours from your class start. Boats failing to finish within this time will be scored “Did Not Finish” without a hearing. This changes rule 35, A4 and A5.

**17. Arbitration:**

17.1 An arbitration hearing will be conducted for all protests lodged in accordance with rule 61 which allege an infringement of a rule of part 2, Part 4 or rule 31.

17.2 Rule 41 is changed to permit a boat that has broken a rule of Part 2, Part4 or rule 31 to take a penalty after racing but prior to any protest hearing. Her penalty shall be scoring penalty equal to a finishing place midway between the boats finishing place and the score for a disqualification. Half points shall be disregarded and the points for other boats shall not be adjusted.

The following will apply.

- a) Arbitration hearings will be held after the protest has been lodged and before the protest hearing.
- b) The time and place of the arbitration hearing will be decided by the arbitrator, and such advice shall be given verbally.
- c) One representative from each boat shall attend the hearing, and no witnesses shall be allowed.
- d) After lodging the protest/request and being given two copies, it will be the responsibility of the protester to locate and bring the protestee to the arbitration hearing.
- e) The arbitrator shall decide the manner in which testimony is given.
- f) The arbitrator may be a member of a protest committee and may give evidence at any subsequent protest hearing.

After taking testimony the arbitrator shall make one of the following conclusions:

- a) The protest does not comply with Rule 61 and the protester may withdraw the protest.
- b) The matter shall proceed to a protest hearing (this may be for any reason decided by the arbitrator including the evidence being too complex or divergent to reach a reasonable and timely conclusion).
- c) There has been no rule broken and the protester may withdraw the protest.
- d) A rule was broken by one or more of the boats involved, in which case, the infringing boat may accept a penalty being scoring points equal to a finishing place mid-way between her actual finishing place and a disqualification, and if so accepted, the protester shall withdraw the protest.

17.3 If the arbitrator decides that a breach of a class rule has had no significant effect on the outcome of the race it may

- a) Impose a scoring penalty less than disqualification; or
- b) Make another arrangement it decides is equitable, this changes rule 64.1.

## **18. Protest and request for redress:**

18.1.1 Protest forms are available from the race office. Protest and request for redress or reopening shall be delivered within the appropriate time limit. The protest committee may extend the time limit on its discretion.

18.1.2 The protest time limit is 1 hour after the last boat has finished the last race of the day.

18.1.3 Notices will be posted no later than 30 minutes after the protest time limit to inform competitors of hearings in which they are parties.

18.1.4 Notice of protests by the race committee or protest committee will be posted to inform boats under rule 61.1(b).

18.1.5 Breaches of instruction 10, 12.4, 25 and will not be grounds for protest by a boat. This changes rule 60.1(a). Penalties for these breaches may be less than disqualification if the protest committee so decides. The scoring for a discretionary penalty imposed under this instruction will be DPI.

**19. Scoring:** The low point system of Appendix A will apply. Rule A9 will apply for scoring boats that are non-finishers, disqualifications and non-starters in a race.

**20. Championship Competition:** A club championship series shall be scored as below.

a) When fewer than 5 races have been completed, a boats series score will be the total of her races scores.

b) When 5 or more races have been completed, a boats series score will be the total of her races scores excluding her worst score.

c) When 8 or more races have been completed, a boats series score will be the total of her race scores excluding her worst 2 scores.

d) Championship points go to the boat in each heat.

e) Skippers may apply to the race committee for dispensation from SI 17.2(d) in exceptional circumstances, ie: sale or damage to boat.

**21. Consistency Competition on Handicap Results:**

a) There are 2 consistency series for each class as per the current year KBSC season programme. A pre-Christmas and post-Christmas consistency series. For the division 1 & 2 fleets there will also be an overall consistency trophy which will combine the Pre-Christmas and Post-Christmas series.

b) When 5 or more heats have been completed, a boats series score will be the total of her race scores excluding her worst score.

c) When 8 or more heats have been completed, a boats series score will be the total of her race scores excluding her worst 2 scores.

d) Consistency points in all classes go to the boat.

**22. Handicaps:** A Place penalty system will be used. Refer to general information section in the current year KBSC season programme.

**23. Resail:** Any yacht may enter a resail of its class race, but points will be awarded only to boats nominated in the original race. Current handicaps at the time of the re-sail will apply. Resail dates will be posted on the official notice board.

**24. Safety Regulations:**

24.1. All yachts shall conform PRIOR TO ITS FIRST NOMINATION to the nominated Safety Category under the Special Regulations Part 1 for Racing Boats Effective 1 July 2021. Including any additions published by the club.

24.2. Personal buoyancy; all crew on Off the Beach, Division 3, JaM, or any other cruiser with non-compliant safety rails and lines are required to wear an approved PFD at all times while on the water.

24.3. Any boat competing in a KBSC event, social or otherwise, shall comply with the relevant Department of Transport Regulations.

24.4. Cruisers sailing in extended races must comply to the nominated safety category with additions as published by the club.

24.5. Off the Beach boats must conform to Special Regulations Part 2 for Off the Beach Boats Effective 1 July 2021, including any additions published by the Club.

- 24.6. Boats on club courses which pass a line from No 11 to No 9 to Hastie Street Mark must comply with Category 5 with additions as published by the club.
- 24.7. Boats on club courses that sail in Koombana Bay bounded by the end of McKenna Point to a point approximately 200 metres North of Beacon F to the South groyne of the Cut Entrance must comply with Category 6. This includes Twilight, Cruising, JaM and special events.
- 24.8. A yacht that retires from a race or decides not to start after having nominated shall notify the Race control tower within 30 minutes of returning to the beach or mooring. Cruisers may notify by radio.

## 25. Entry Requirements:

- 25.1. Only yachts registered with the Club are eligible for consistency and championship points.
- 25.2. Non-members may sail in a maximum of six Saturday club races only, but must have registered and paid via SailPass prior to nominating (receipt must be provided at the registration desk). After this they are expected to join as a KBSC club member to continue racing.
- 25.3. Non-financial members may not sail in any club races until they have paid their nominated membership fees.
- 25.4. The race committee may refuse nominations from boats with non-financial crews or skippers. Boats that race with non-financial members will not be eligible for consistency or championship points.
- 25.5. Boats sailing in club races must display on the mainsail a club or class registered number.
- 25.6. Boats competing in approved races and flag officers who miss races because of club commitments may apply to the sailing committee in writing, prior to the event to have average points awarded for the missed races. The application must include the nomination fee for the missed race. Average points will be based on the number of starters in the series.

**26. Official Boats:** The race committee boat will be displaying the KBSC burgee. Official race committee boats will be marked with a green and white flag. These are designated as an “obstruction” and must be avoided at all times.

## 27. Prizes:

- 27.1. Weekly Awards.
- |                 |   |
|-----------------|---|
| 1 to 4 starters | 1 <sup>st</sup> place                                       |
| 5 to 7 starters | 1 <sup>st</sup> and 2 <sup>nd</sup> place                   |
| 8 plus starters | 1 <sup>st</sup> , 2 <sup>nd</sup> and 3 <sup>rd</sup> place |
- 27.2. Consistency Series and Club Championship.
- |                 |   |
|-----------------|---|
| 1 to 5 starters | 1 <sup>st</sup> and 2 <sup>nd</sup> place                   |
| 6 plus starters | 1 <sup>st</sup> , 2 <sup>nd</sup> and 3 <sup>rd</sup> place |

**28. Disclaimer of Liability:** Competitors compete in club racing entirely at their own risk. See Rule 4, decision to race. The organising authority will not accept any liability for material damage or personal injury or death sustained in conjunction with or prior to, during or after club racing.

**29. Insurance:** Each participating boat shall be insured with valid third party liability insurance with a minimum cover of \$10 000 000 or the equivalent. A certificate of conformity for such cover must be supplied to the club prior to entering your first club race, along with confirmation of a current registration with the Department of Transport where applicable. Any renewals that fall due during the season must be updated with the club office once paid. No boat is to compete in any club event without having current insurance cover.



## Supplementary Extended Bay Race Sailing Instructions

1. **Nominations:** As per SI 11. To be valid the entry must be accompanied by the nomination fee and contain an accurate crew list in writing. The crew may be updated in writing at the race control office or start tower prior to the start or by radio at the radio check. The relevant Safety Category and any additions to your class must be adhered to, to be a valid competitor.
2. **Start Line:** Shall be an imaginary line between the KBSC race control tower and the outer end of the Club Mooring Marker (yellow cross). Boats must pass between the jetty and the outer Mooring Marker in a West to East direction to have started correctly.
3. **Finish Line:** As per SI 14
4. **Staring Procedure:**
  - T4.1 Warning Signal: 10 minutes to the start a Red light is displayed at the Race Control Tower.
  - T4.2 Preparatory Signal: 5 minutes before the start the red light is extinguished and an orange light is displayed.
  - T4.3 Start: The Orange light extinguished and green light is displayed.
5. **Radio Schedule:**
  - 5.1 A radio check MUST be performed and acknowledged with the KBSC start tower or nominated yacht on VHF CH72 confirming the number of people on board (POB), 20 minutes prior to the warning signal.
  - 5.2 A listening watch must be kept for the duration of the race, on VHF Channel 72
  - 5.3 The first scheduled radio check will be 4 hours after the start at 10 minutes past the hour.
  - 5.4 Radio checks will continue to be made every 4 hours until the completion of the race.
6. Notice of Race for individual series/race can include or supersede these instructions.
7. Failure to comply with these regulations will make your boat ineligible to race.
8. The time limit for the first boat in each fleet to finish Extended Bay races shall be 1630hrs. Subsequent finishers are required to finish within 60 minutes of the first. Boats failing to finish within this time will be scored "Did Not Finish" without a hearing. This changes rule 35, A4 and A5.

<b>KBSC CLUB MARK COORDINATES</b>						
<b>Bay Marks September 2023</b>						
1	33*	18	870	115*	38	890
2	33*	18	560	115*	38	820
3	33*	18	400	115*	40	010
4	33*	18	670	115*	39	560
5	33*	17	664	115*	39	605
6	33*	18	800	115*	39	390
8	33*	19	040	115*	38	880
11	33*	17	656	115*	40	065
F	33*	18	050	115*	39	190
G	33*	18	060	115*	39	080
Finish	33*	19	010	115*	38	720
Armstrong	33*	19	070	115*	39	150
Yellow X	33*	18	950	115*	38	740
A	33*	18	950	115*	39	300
B	33*	18	950	115*	39	200
C	33*	18	670	115*	39	090
D	33*	18	670	115*	39	180
E	33*	18	470	115*	39	200
H	33*	17	690	115*	38	910
<b>Ocean Marks September 2023</b>						
7	33*	19	120	115*	37	281
9	33*	18	750	115*	36	050
10	33*	17	700	115*	37	900
12	33*	21	200	115*	34	760

## Supplementary Twilight Sailing Instructions

**T1. Nominations:** All boats must nominate at the race control office by signing the 'Sign On' sheet and listing their crew prior to the 10-minute warning signal. This is a safety requirement and any boat failing to nominate will be deemed not to be racing and will be scored a DNS. Any nomination fee must be paid prior to racing, or for boats leaving from other locations, 1 hour after crossing the finish line to be eligible to score points.

Skippers can nominate for which ever fleet their boat is most suited to. e.g. Some S80s may choose to start with fleet 1 as they are not part of the 'serious' Saturday racing fleet. Handicaps will be applied across the three fleets with one set of results (first, second and third) being acknowledged at presentations.

**T2. Start Line:** Shall be an imaginary line between the KBSC race control tower and a day buoy placed outside the outer club Mooring Marker (yellow cross marker). Boats must pass between the outer Mooring Marker and day buoy in a West to East direction to have started correctly.

**Start Sequence:** There will generally be three starts. (Start times and fleets may vary as instructed by Rear Commodore Sailing or Twilight Coordinator).

1755hrs - Fleet 1: Div 3 and Cruisers

1800hrs - Fleet 2: Division 2

1805hrs - Fleet 3: Division 1

**Start signals for a 1800hrs race start time** (may be accompanied by sound signals also)

**Note:** Start times may vary at the start and end of the season. See the Sailing Programme for expected start times.

- (1745hrs) 10 minute warning – Red light displayed on the start tower
- (1750hrs) 5 minute preparatory signal – Red light extinguished and orange light displayed
- (1755hrs) Start for 1st fleet – green signal displayed (for 4 minutes)
- (1759) Preparatory signal for 2<sup>nd</sup> fleet – green extinguished and amber displayed 1 minute before start.
- (1800hrs) Start for 2nd fleet - green signal displayed (for 4 minutes)
- (1804hrs) Preparatory signal for 3rd fleet – amber light displayed 1 minute before start.
- (1805hrs) Start for 3rd fleet – green light displayed

**Course:** A single course will be sailed by all fleets and is available at registration.

**T3. Finish Line:** As Per SI 14.

**T4. Finishing Declaration:** Passing through the finish line is a declaration that the boat has sailed the correct course, with no infringements of the RRS.

**T5. Equipment:** All twilight racing is jib and main (JAM), with no change of sails to be made unless reefing or changing "down" for safety reasons.

**T6. Shortening Courses:** Courses can be shortened by a race committee boat giving verbal instructions at the mark. The race committee boat may display code flag S. After rounding this mark all boats shall proceed to mark 8 which is to be rounded to starboard and go direct to the finish.

**T7. Time Limit:**

T7.1 All racing is to be completed during daylight hours to ensure compliance with DPI regulations. Any boat that has not finished prior to the gazetted time, which will vary seasonally, will be scored Did Not Finish without a hearing.

T7.2 No boat is to remain sailing on the bay after the gazetted daylight hours expire unless they carry and operate navigation lights in accordance with regulation 3.23 of Australian Sailing 210914 Special Regulation Part 1 Keelboats.

T7.3 On Wednesday twilight races any boats not finishing within 75minutes of their start time will be scored Did Not Finish without a hearing.

**T8. Safety: OTB (Off the Beach)** crews must wear an approved PFD at all times. All other boats are to ensure that they have sufficient PFD's for all people aboard. Any boat with non-compliant safety rails and lines must have all crew wearing PFD's during sailing.

### General Information

**G1. Boat Registration:** All new boats to the club must register by completing a boat registration form, available from the KBSC Race control office. Thereafter the registration for each season can be completed by filling in the details on the race nomination form.

**G2. Use of Facilities:** Boat owners who use club facilities, launching, retrieving, jetty, mooring area and hardstand must be full members of the club. Cruisers on club moorings will not be winched into the water without this confirmation being supplied.

**G3. Tractors:** Only approved senior members are to drive the club tractors.

**G4. Hardstand Mooring and Winch Fees:** See the "Mooring, Hardstand and Winch Policy and fees" for 2018/2019.

**G5. Membership fees:** See the schedule of fees elsewhere in the current year KBSC season programme.

**G6. Championship Series:** Will use the current years VYC yardsticks where required.



# Henty View

PREMIUM WINES

[www.hentyview.com.au](http://www.hentyview.com.au)

[admin@hentyview.com.au](mailto:admin@hentyview.com.au)

Jason - 0438746492

GEOGRAPHE  WINE REGION



**G7. Handicap System:** The Performance Based System the club uses has been adjusted slightly for the coming season. Due to the closeness of fleets over the past few seasons a less severe deduction system is to be used.

G7.1 Sailors should also note that the following: Both first and last boats depending on the number of finishers have their handicaps adjusted each week as per previous seasons. This is to prevent handicap creep against boats that are not sailing on a regular basis.

G7.2 ALL monohull boats are handicapped against the club's scratch boat which has a handicap of 1.0% at the start of the season. This enables boats to move between fleets without the need to change their handicap, although moving between fleets is not encouraged.

G7.3 The PBS applies to all series other than any Championship series.

G7.4 Consistency racing under the PBS includes the club & ocean racing series. All series are part of the final overall consistency results.

**G8. Boats Changing Fleets:** Any boat temporarily crossing over into another fleet (such as sailing JaM instead of Division 1) will be penalised 20% on handicap so as not to disadvantage the regular fleet.

The Penalty system will be used as follows.

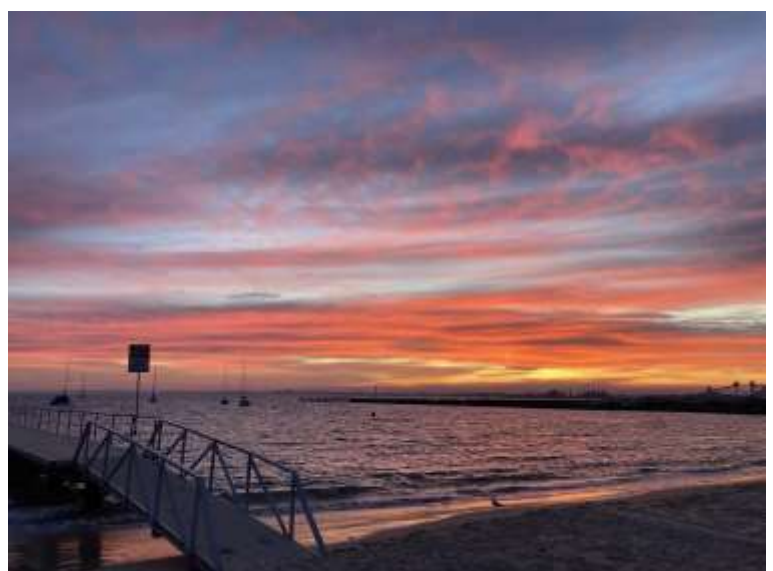
1-4 finishes	
	+0.005 penalty for 1st place
	-0.005 adjustment for last place
5-7 finishes	
	+0.010 penalty for 1st place
	+0.005 penalty for 2nd place
	-0.010 adjustment for last place
	-0.005 adjustment for 2nd last place
8+ finishes	
	+0.015 penalty for 1st place
	+0.010 penalty for 2nd place
	+0.005 penalty for 3rd place
	-0.015 adjustment for last place
	-0.010 adjustment for 2nd last place
	-0.005 adjustment for 3rd last place

#### How it works:

Your PBS handicap is say 0.85. This is a % - Your **actual** finishing time is multiplied by this % to give you a **corrected** finishing time. If your **corrected** time is a winning time (+8 finishes) your new handicap is 0.865. If last (i.e. you sailed a crap race) it would be 0.835 and so on.

#### What does it mean?

If Boat 'A's handicap is 0.865 & Boat 'B's is 0.840 - 'A' must beat 'B' by 0.025 or more realistically to think in MINUTES 'A' must beat 'B' by 2.5 min in a 100min race or 5min in a 200min race or 1.25min in a 50 min race etc. i.e. – the length of the race is irrelevant as your handicap is a %. i.e. **0.01 represents 1 minute per 100 minutes of racing**. This makes it simple to keep a watch on all those boats behind you, or if any, in front of you.



# **APH**

## **CONTRACTORS**

**FOR ALL YOUR CONSTRUCTION  
& CIVIL NEEDS**

**EARTHWORKS**

**ROADWORKS**

**DRAINAGE & SEWERAGE**

**SUBDIVISION CONSTRUCTION**

**BULK HAULAGE**

**LOW LOADER HIRE**

**EQUIPMENT HIRE**

**ROCK BREAKING**

**9725 4755**

**Fax: 9725 4248**

**Lot 26 Wetherly Drive Picton**

**admin@aphcontractors.com.au**

**www.aphcontractors.com.au**



## THANK YOU TO OUR SPONSORS

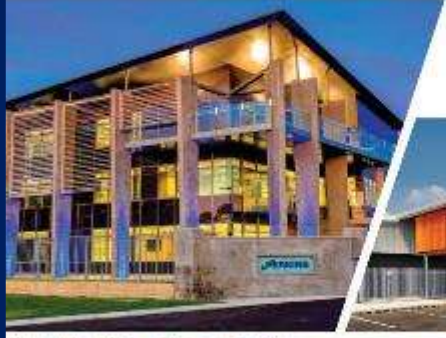
APH Contractors  
ARI - (Asset Reliability Inspections)  
Batley Industrial Electrics  
Birch Design  
Brecken Health Care  
Chris Rowe & Co  
Cuprum Distillery  
Henty View Wines  
JB Sail Repairs  
Marine Plus/ Gill Clothing  
Naturaliste Yachts & Chandlery  
Oceanwest Charters  
Perkins Builders  
Priority Management  
South West SubSea  
TAYCOT  
Windward Marine

Koombana Bay Sailing Club would like to thank all of this season's sponsors and urge all members to support the businesses which support us.



# PERKINS

perkinsbuilders.com.au



Perkins Builders are your commercial construction partner, proven to deliver a diverse range of commercial, industrial, education, health and civil projects throughout Western Australia.

 perkins-builders | (08) 9721 7300

